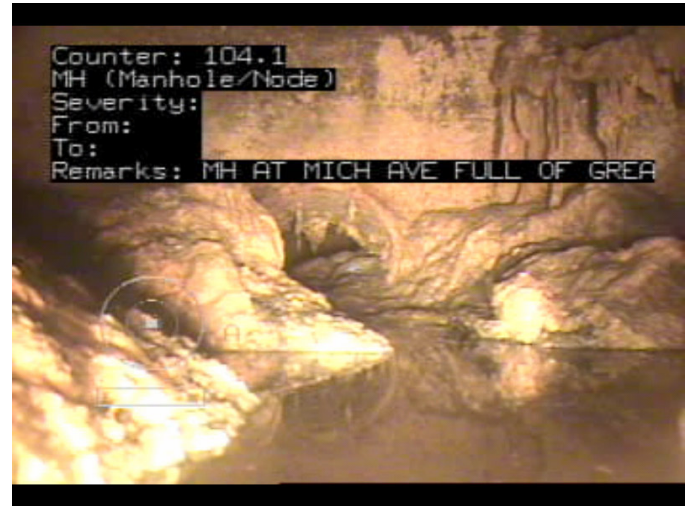


# THE IMPORTANCE OF GREASE INTERCEPTOR MAINTENANCE



**Typical sewer manhole.**



**Grease encrusted sewer manhole.**

The discharge of grease-laden waste into the public sanitary sewer system is a major concern to the City of Lansing. Each year the City's Public Service Department spends thousands of dollars in removing coagulated grease from the public sewer mains. In the past, this cost was passed on to all users of the City of Lansing sanitary sewer system. As of July 1, 2005, the cost of removing this grease will be charged to the business/property that discharged the grease laden waste into the City's sewer.

Poor maintenance of your business/property's grease interceptor can also lead to grease clogs in your building's sewer pipes, equipment failure, and sewage backups, all which can affect your ability to operate your business. Regular maintenance of your business/property's grease interceptor will not only protect the City's sewer system, but will protect your ability to operate your business.

Please follow the maintenance schedule recommended by your grease interceptor's manufacturer. The required cleaning/pumping of your grease interceptor will depend upon the size of your grease interceptor and the amount of flow through the grease interceptor. If you do not have regularly scheduled cleaning and pumping of your grease interceptor, then you are not doing proper maintenance.



## KEEP GREASE IN ITS PLACE!