

# SPRING STORMWATER TIPS

---

## TO PROTECT OUR WATERSHED

---

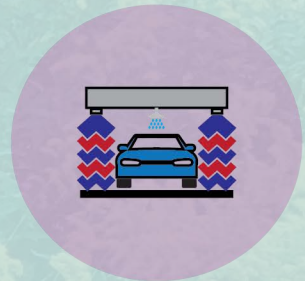


### CLEAN

Uncover and clean catch basins, drains, gutters, and downspouts to help avoid flooding.

### WASH WISELY

When you wash your car in the driveway or road, the soap, wax, oil and grease washes into stormdrains. It's best to use commercial facility that captures and reuses waste water before sending it to the sanitary sewer.

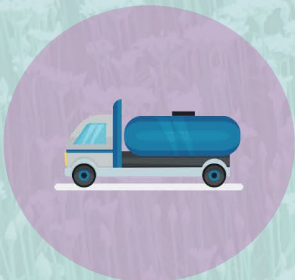


### RECYCLE

Dispose of any household chemicals left over from spring cleaning or yard work at a household hazardous waste collection event. Replace them with environmentally friendly alternatives.

### GARDEN SAFE

When discharged into waterways with runoff, lawn fertilizers can fuel algae blooms and pesticides can kill aquatic life. Limit usage or use environmentally friendly alternatives when possible.



### INSPECT

Inspect and pump septic tanks and make sure your sump pump is working properly. Install a water alarm in basement in case of flooding.

### SCOOP

Pet waste isn't just a nuisance in yards and parks, it's full of bacteria that can make people and aquatic life sick. Frequently pick up pet waste from your yard and always carry a bag to scoop on walks.

