

## **GLRC PEP Materials**

The following materials are available to GLRC members for use at events, in lobbies, and other outreach opportunities. Contact the GLRC Coordinator or use the form at [MyWatersheds.org/\\_\\_\\_\\_\\_](http://MyWatersheds.org/_____) to request them.

### **Displays**



Tri-Panel Display- Best for indoor events. Less optimal for lobby display and outdoor events due to size and stability. Fairly difficult to assemble.



Scroll Banner Display- Easiest option. Small footprint, easy to set up. Useful in all situation (other than high wind outdoor events). Two units are available. Each community needs to display in their lobby for a few weeks a year; GLRC coordinator will arrange this with you.

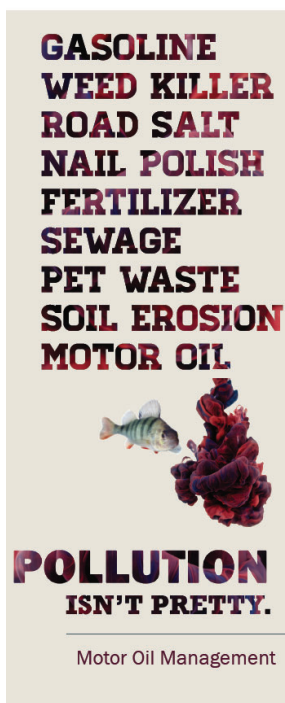
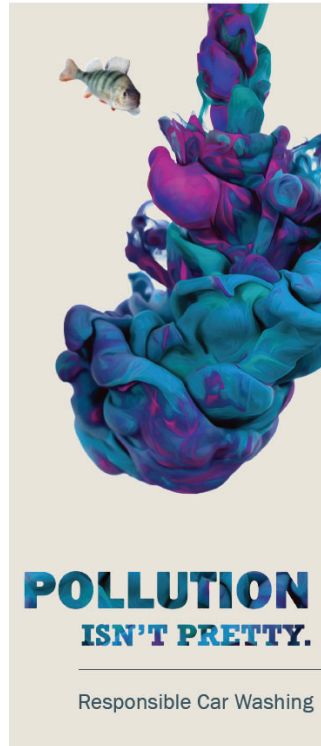


Enviroscapes Watershed Model- Interactive exhibit to illustrate stormwater runoff. Kool-aid mix, salt, and other household materials represent lawn chemicals and other nonpoint source pollution. Users spray water to mimic rain and visualize how runoff picks up pollutants and impacts downstream waterways.

Kid focused but works with all ages. Best suited for presentations or family events. All necessary materials and a lesson script are provided.

## Brochures

The GLRC has created 6 brochures related to required PEP topics, including car washing, motor oil management, green infrastructure, lawn and garden care, pet waste management, and watershed basics. GLRC also utilizes brochures developed by other agencies, such as EPA's septic smart brochure. Most members have committed to making brochures available in their municipal lobbies, distributing them at events, and/or including them on their websites. Digital or print copies are available.



## “Pollution Isn’t Pretty” Campaign Graphics

Available digitally or in 7x3 or 5x5 cardstock flyers. Can be used for Facebook posts, event handouts, used in municipal newsletters, etc. Available for download on [MyWatersheds.org](http://MyWatersheds.org) or hard copies at TCRPC.



## Seasonal Infographics

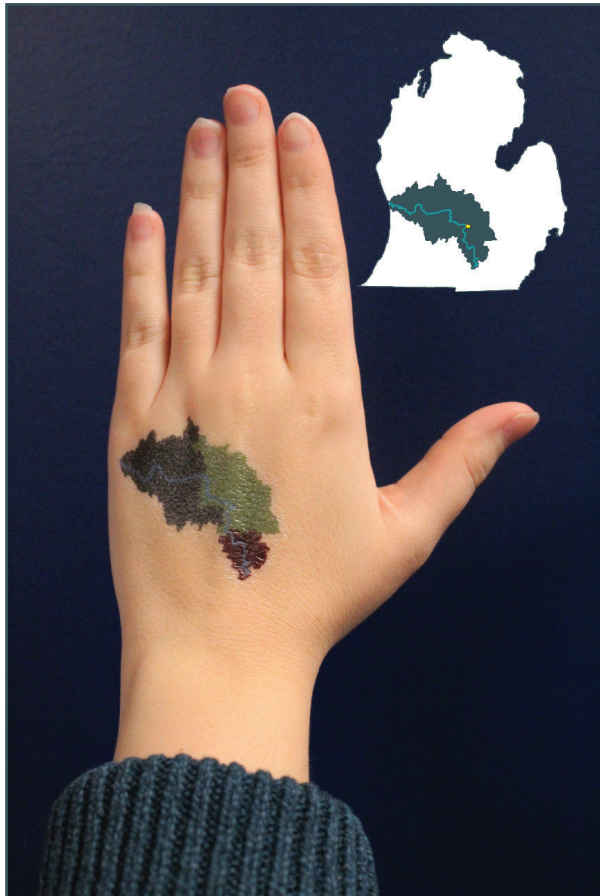
JPG images with quick seasonally appropriate information. Can be used for Facebook posts, printed into flyers, used in municipal newsletters, etc. Available for download on [MyWatersheds.org](http://MyWatersheds.org).





## Temporary Tattoos

Great for family/kid events. Temporary tattoos of the Grand River watershed. Geographically accurate when used on left hand.



## GLRC Reports

Annual Reports are professionally printed in limited quantities and available upon request. Annual Reports and Quarterly Newsletters may also be printed in-house and distributed at events or in lobbies.



## Rubber Bracelets

Popular at family/kid events. Include website and "Pollution Isn't Pretty"



200	300	500	1000	2000	3000	5000
\$0.41	\$0.36	\$0.25	\$0.15	\$0.14	\$0.14	\$0.13

## Dog Waste Bag Dispenser


Good at events where there is someone to supervise the outflow, as people will take them all if left alone. Typically control by offering a dispenser in exchange for signing a "Scoop" pledge.



150	250	500	1000	2500
\$1.26	\$0.99	\$0.87	\$0.83	\$0.78

## Dog Waste Bag Dispenser

Map of area dog-friendly parks, info on dog wastes' impact on the watershed, and optional pledge form. Offer dog waste bag in exchange for signing pledge.



**Picking up after your pet isn't just polite, it protects the environment!**

**10 million tons** of dog waste are produced every year in the United States alone, and **just one gram** can contain as many as **23 million fecal coliform bacteria**. (CDC, US EPA)

**Dog waste is a major contributor to stormwater pollution.** Dog waste that isn't picked up is carried into rivers, streams and drains by stormwater runoff, contaminating our water resources.

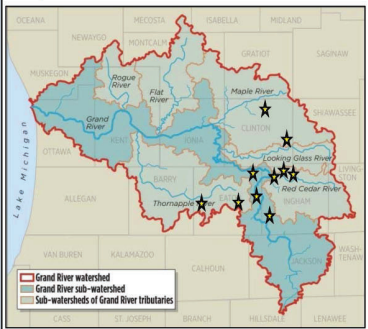
**All runoff in the Grand River watershed (below) eventually makes its way into the Grand River and Lake Michigan.** It doesn't matter if your dog lives miles from a stream or river; its waste can impact water quality close to home and further downstream.

**The Tri-County Area has many Dog Friendly Parks!**

**Visit them responsibly:** ★

**Off-Leash**  
 Soldan Dog Park  
 1601 E Cavanaugh Rd, Lansing, MI  
 Northern Trail Dog Park  
 6400 Abbot Rd, East Lansing, MI

**On-Leash**  
 Lake Lansing Park North  
 6260 E Lake Drive, Haslett  
 Sleepy Hollow State Park  
 7835 E Price Road, Laingsburg  
 Lansing River Trail  
 300 N Grand Avenue, Lansing  
 Woldumar Nature Center  
 5739 Old Lansing Road, Lansing  
 Burchfield Park  
 881 Grovenburg, Holt, MI  
 Crandell Park  
 3425 E Clinton Trail, Charlotte, MI  
 Fitzgerald Park  
 133 Fitzgerald Park Dr, Grand Ledge, MI  
 Lincoln Brick Park  
 13991 Tallman Rd, Grand Ledge, MI  
 Paul Henry-Thornapple Trail  
 Mason Road Trail Head, Vermontville, MI  
 Motz County Park  
 4630 N Dewitt Road, St. Johns, MI  
 Contact your local parks department for others!



**GREATER LANSING REGIONAL COMMITTEE FOR STORMWATER MANAGEMENT**  
[www.mywatersheds.org](http://www.mywatersheds.org)

Learn more at  
[www.MyWatersheds.org](http://www.MyWatersheds.org)

---

**PLEDGE** to scoop for a **FREE** pet waste dispenser with bags!

Name: \_\_\_\_\_

Dog's name: \_\_\_\_\_

Join GLRC's email list: \_\_\_\_\_

Email: \_\_\_\_\_

**I pledge to be environmentally responsible by:**

- Keeping my dog on a leash and on the trail in natural areas
- Scooping and properly disposing of pet waste


**Signature:**


\_\_\_\_\_


## Rain Garden Seed Card

Informational card detailing rain gardens, printed on plantable paper embedded with black eyed susan seeds. Recommended for events where someone is supervising the outflow, as they are expensive and highly popular (attendees will attempt to take many).

**Rain Gardens: A Beautiful, Low-Cost Water Quality Solution**

 A rain garden is a planted depression in the landscape that collects water from roof downspouts, driveway runoff or sump pump discharges and allows it to soak into the ground rather than enter the storm sewer system.

 When rain runoff is piped to a river through a storm sewer, it can carry harmful pollutants and sediment with it while contributing to channel erosion. Capturing runoff in a rain garden filters impurities and recharges groundwater.

 Planted with native grasses and flowering perennials, rain gardens are a cost effective, low maintenance and beautiful way to reduce and filter runoff from your property. Create butterfly habitat, prevent flooding and make your lawn more attractive by installing a rain garden at your own home!

For more information, visit [MyWatersheds.org](http://MyWatersheds.org)

This card is printed on plantable seed paper embedded with native Black-Eyed Susans! Place this card under a thin layer of soil, water thoroughly and watch it bloom!

**GREATER LANSING REGIONAL COMMITTEE FOR STORMWATER MANAGEMENT**

## Pricing

100 to 249	\$1.87 each
250 to 499	\$1.54 each
500 to 999	\$1.41 each
1000 to 2499	\$1.26 each
2500 or more	\$1.14 each

## Tote Bags

Popular at events.



25	50	100	250	500	1000
\$1.21	\$1.16	\$1.04	\$1.05	\$0.87	\$0.86

## Branded Pens

Popular handouts at events.



Quantity	150+	300+	500+	1000+	2500+	5000+
MSRP	<del>\$1.41</del>	<del>\$1.14</del>	<del>\$1.08</del>	<del>\$1.04</del>	<del>\$0.97</del>	<del>\$0.89</del>
On Sale	\$1.41	\$0.89	\$0.89	\$0.89	\$0.89	\$0.89

## Stickers

Popular at events.

