

Even if you don't live near water, the fertilizer, pet waste, motor oil and other pollutants from your yard end up in Michigan's fresh water supply.

POLLUTION
ISN'T PRETTY.ORG



**Pet waste on the
ground means
E.coli in our**

WATER.

**Clean up after
your pup.**

pollutionisntpretty.org



POLLUTION **ISN'T PRETTY.**

Learn what you can do to help keep our
water clean at pollutionisntpretty.org



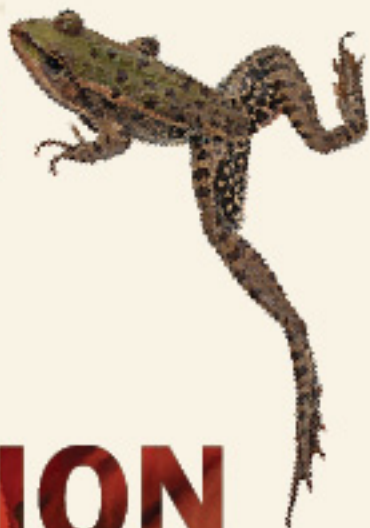
POLLUTION
ISN'T PRETTY.

Learn what you can do to help keep our
water clean at pollutionisntpretty.org

**GASOLINE
WEED KILLER
NAIL POLISH
MOTOR OIL
FERTILIZER**



pollutionisntpretty.org



POLLUTION

ISN'T PRETTY.ORG

POLLUTION ISN'T PRETTY.

Learn what you can do to help keep our
water clean at pollutionisntpretty.org





What goes
on the ground
ends up in our

WATER.

Pour sparingly.

pollutionisntpretty.org