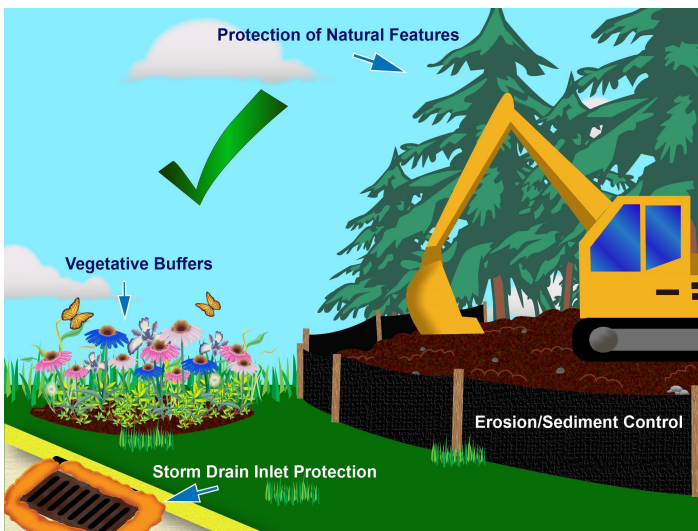


CLEAN CONSTRUCTION FOR SOIL EROSION PREVENTION

As a developer, you play a big role in keeping our waterways clean. Follow these tips to prevent erosion at your site and reduce stormwater pollution.

DO



DON'T



WHAT CAN YOU DO?

- Contact the local municipality to determine if you need a permit.
- Pick a combination of erosion and sediment controls that work for your site. This includes practices that protect natural landscape features, like streams and wetlands, and stabilize soil.
- Use best practices that protect and maintain silt fences, storm drain inlets, and construction entrances.

WHY IS THIS NECESSARY?

- Water that falls on your construction site either soaks into the ground or runs off into storm drains. Any pollution and sediment on the ground can be swept up with this stormwater as well.
- Water and pollution that goes into storm drains eventually ends up in lakes, rivers, and streams.
- Once these pollutants reach waterways, they can harm aquatic habitats and make them unsafe for outdoor fun.
- Most importantly, allowing polluted runoff to leave your site and enter a storm drain or waterway is against the law.