

YOUR LOCAL WATERSHED GROUPS...

Who are they? What do they do?

A **watershed** is any area of land that drains to a common point. In the Tri-County region of Clinton, Eaton and Ingham Counties there are several watershed groups that are working hard to protect, improve, conserve and promote the water resources of mid-Michigan and ultimately the Great Lakes. The purpose of this fact sheet is to introduce you to each of these groups and provide a brief overview of what they are doing in your watershed.



Michigan Department of Environmental Quality

Non-Point Source Program (aka 319 Projects)

The Clinton and Eaton Conservation Districts and Michigan State University Institute of Water Research each received a 319 non-point source grant from the Michigan Department of Environmental Quality to develop watershed management plans for the Maple River and Upper Looking Glass River, Middle Grand River, and Red Cedar River Watersheds respectively. These plans will focus on improving the quality of impaired water bodies. Clinton Conservation District recently received implementation funding to move their completed plan towards on-the-ground water quality improvements.

Maple River Watershed Management Planning Project: www.clintonconservation.org 989-224-3720 x3

Upper Looking Glass River Watershed Planning Project: www.clintonconservation.org 989-224-3720 x3

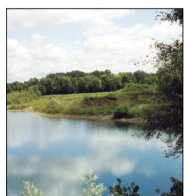
Middle Grand River Watershed Planning Project: www.middlegrandriver.com 517-543-5848 x5

Red Cedar River Watershed Planning Project: www.redcedarriver.weebly.com 517-353-3742



www.mi.gov/nps

517-335-6010



www.mywatersheds.org

The Greater Lansing Regional Committee for stormwater management (GLRC) is a guiding body comprised of communities with municipal separate storm sewer systems (MS4) within the Greater Lansing region. The Committee guides the implementation of the permitted stormwater program as mandated by the state and federal government. The GLRC works to meet specific permit requirements within the urbanized area to keep polluted runoff from reaching the Grand, Red Cedar, and Looking Glass Rivers.

For more information visit: www.mywatersheds.org or contact Erin Campbell, Tri-County Regional Planning Commission at ecampbell@mitcrpc.org, 517-393-0342.



Mission Statement:

To protect and preserve the history and the natural resources of the Middle Grand River watershed by promoting education, conservation, restoration, and wise use of watershed resources.

MGROW is an outgrowth of Grand River Expedition 2010, and strives to bring together local communities, sub-watershed groups and other stakeholders in the Middle Grand River towards a greater understanding of and stewardship for the river. One objective is to serve as a data bank and an information clearinghouse for the entire watershed. MGROW will organize and conduct educational and scientific expeditions on the entire main channel every ten years, and encourage and support periodic similar educational activities on the tributaries of the entire Grand River.

www.mgrow.org

Local “Friends” Groups

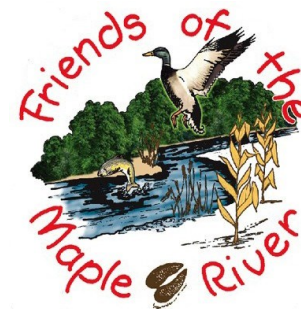
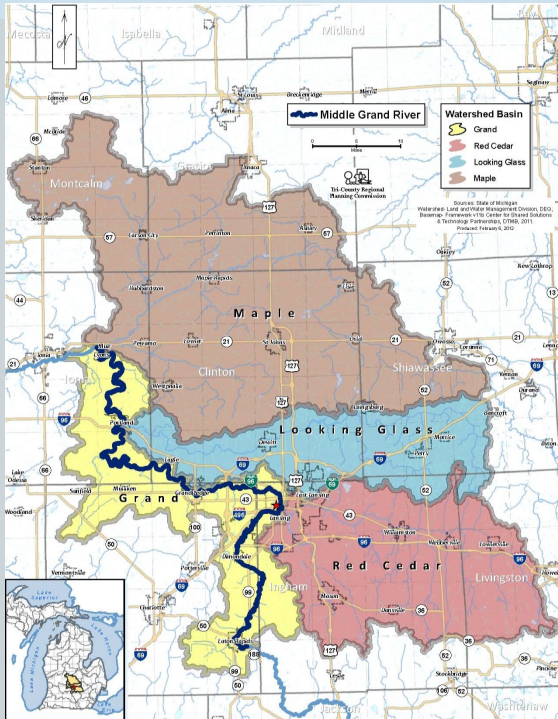
Local “friends” groups play an important role in watershed protection, education, recreation and outreach in their respective watersheds. For more information, please visit the **Friends of the Looking Glass River** and **Friends of the Maple River** websites listed below.



Mission Statement:

Our mission is to promote the enjoyment of and responsibility for the river, and to help maintain and improve the watershed. We work to educate the public and promote awareness of the Looking Glass River Watershed.

www.lookingglassriverfriends.org



Mission Statement:

Preserve, improve, and educate the public regarding the wise use of the Maple River and its watershed. We strive to be partners in conservation with local citizens, organizations, groups and businesses.

www.friendsofthemapleriver.org